



Rope Access Pty Ltd T/AS Safety Roof Anchors

P: +61 2 9939 3523 F: +61 2 9939 7868
PO Box 758, Freshwater NSW 2096

ABN: 67 147 756 670 ACN: 147 756 670

sales@safetyroofanchors.com.au
www.safetyroofanchors.com.au

S.R.A. fully engineered product range

400 Series

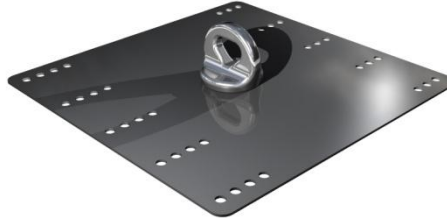
Truss-T-Grip®

Profile Grips

Ladder Restraint Brackets

Fixings

SPECIFICATION: MAXIFIT 360° SURFACE MOUNT ANCHOR



The System

Allfit 360° is a top fixed fall arrest anchor point designed for easy installation into a wide variety of steel roofs. The pre-drilled base plate provides for a quick installation while the swivelling eyebolt ensures uniform loading to all sides.

Special Features:

- Heavy duty swivel eye bolt
- Full grade 316 stainless steel construction
- Quick and easy installation
- Suitable for both steel and timber structures

Uses:

Designed for abseiling and to support a fall arrest load of 15 kN in any direction (always in shear) provided a suitable personal shock absorber is used.

Installation by trained and certified personnel in accordance with AS/NZS 4488.2:1997 and AS/NZS 1891.4:2009 and manufacturer's instructions.

Technical Data

Material Used:

Base plate: 3mm grade 316 stainless steel

Swivel eyebolt: Investment cast 316 Stainless Steel

Finish:

Base plate: 2B stainless steel (can be powder coated)

Swivel eyebolt: Electro polish

Ultimate load:

15 kN

Dimensions:

- Size of plate – 447mm x 436mm
- Eye Diameter – 32 mm x 26 mm
- Weight –

Fixing Details:

- Timber rafter/ batten – min 70mm x 35mm
- Steel Purlin – min gauge 150 x 1.2 mm
- Roof Sheet – min gauge 0.42mm

Maintenance:

Inspection required by competent person at intervals not exceeding 12 months as specified in AS 1891.4:2009 and AS/NZS 4488.2:1997

Standards:

Complies with WHS Act 2011 and relevant Codes of Practice.

Australian Standard – AS/NZS 1891.4:2009, AS/NZS 4488.2:1997, AS/NZS 5532:2013