



## Rope Access Pty Ltd T/AS Safety Roof Anchors

P: +61 2 9939 3523 F: +61 2 9939 7868  
PO Box 758, Freshwater NSW 2096

ABN: 67 147 756 670 ACN: 147 756 670

sales@safetyroofanchors.com.au  
www.safetyroofanchors.com.au

S.R.A. fully engineered product range

400 Series

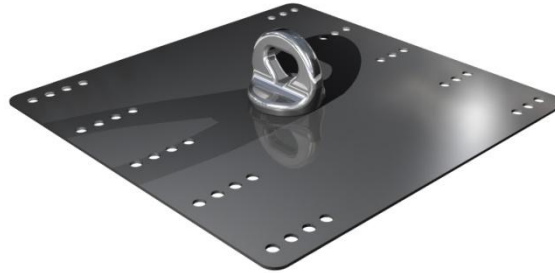
Truss-T-Grip®

Profile Grips

Ladder Restraint Brackets

Fixings

### SPECIFICATION: ALLFIT 360° SURFACE MOUNT ANCHOR



#### **The System**

Allfit 360° is a top fixed fall arrest anchor point designed for easy installation into a wide variety of steel roofs. The pre-drilled base plate provides for a quick installation while the swivelling eyebolt ensures uniform loading to all sides.

#### **Special Features:**

- Heavy duty swivel eye bolt
- Full grade 316 stainless steel construction
- Quick and easy installation
- Suitable for both steel and timber structures
- 2mm thickness version suitable for fall arrest only
- 3mm thickness version suitable for abseil use

#### **Uses:**

2mm version: Designed to support a fall arrest load of 15 kN in any direction (always in shear) provided a suitable personal shock absorber is used.

3mm version: Designed for abseiling as well as to support a fall arrest load of 15 kN in any direction (always in shear) provided a suitable personal shock absorber is used.

Installation by trained and certified personnel in accordance with AS/NZS 4488.2:1997 and AS/NZS 1891.4:2009 and manufacturer's instructions.

#### **Technical Data**

##### **Material Used:**

Base plate: 2mm or 3mm grade 316 stainless steel

Swivel eyebolt: Investment cast 316 Stainless Steel

##### **Finish:**

Base plate: 2B stainless steel ( can be powder coated)

Swivel eyebolt: Electro polish

##### **Ultimate load:**

15 kN

##### **Dimensions:**

- Base plate – 282mm x 290mm
- Eye Diameter – 32mm x 26mm
- Weight – x

##### **Fixing Details:**

- Timber rafter/ batten – min 70mm x 35mm
- Steel purlin – min gauge 150 x 1.2 mm
- Roof Sheet – min gauge 0.42mm

##### **Maintenance:**

Inspection required by competent person at intervals not exceeding 12 months as specified in AS 1891.4:2009 and AS/NZS 4488.2:1997

##### **Standards:**

Complies with WHS Act 2011 and relevant Codes of Practice.

Australian Standard – AS/NZS 1891.4:2009, AS/NZS 4488.2:1997, AS/NZS 5532:2013