



Rope Access Pty Ltd T/AS Safety Roof Anchors

P: +61 2 9939 3523 F: +61 2 9939 7868
PO Box 758, Freshwater NSW 2096

ABN: 67 147 756 670 ACN: 147 756 670

sales@safetyroofanchors.com.au
www.safetyroofanchors.com.au

S.R.A. fully engineered product range

400 Series

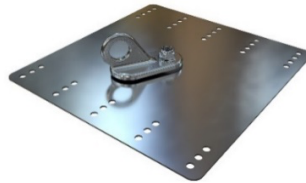
Truss-T-Grip®

Profile Grips

Ladder Restraint Brackets

Fixings

SPECIFICATION: ALLFIT 360° SURFACE MOUNT ANCHOR



The System

Allfit 360° is a top fixed fall arrest anchor point designed for easy installation into a wide variety of steel roofs. The pre-drilled base plate provides for a quick installation while the swivelling AA406 ensures uniform loading to all sides.

Special Features:

- Heavy duty swivel eye bolt
- Quick and easy installation
- Suitable for both steel and timber structures
- 2mm thickness version suitable for fall arrest only
- 3mm thickness version suitable for abseil and fall arrest use

Uses:

2mm version: Designed to support a fall arrest load of 15 kN in any direction (always in shear) provided a suitable personal shock absorber is used.

3mm version: Designed for abseiling as well as to support a fall arrest load of 15 kN in any direction (always in shear) provided a suitable personal shock absorber is used.

Installation by trained and certified personnel in accordance with AS/NZS 4488.2:1997, AS/NZS 1891.4:2009, ISO 22846 (2003) and manufacturer's instructions.

Product Warranty:

10 years from date of purchase subject to correct installation, use and maintenance in accordance with manufacturer's specifications and recommendations.

Important Note:

Failure to supply and/or install proprietary product in accordance with above standards and codes, specifications and instructions voids complete system certification and/or warranty.

Technical Data

Material Used:

Base plate: 2mm or 3mm grade 316 stainless steel

Swivel AA406: Investment cast 316 Stainless Steel

Finish:

Base plate: 2B stainless steel (can be powder coated)

Swivel AA406: Electro polish

Ultimate load:

Abseil 15kN Fall Arrest 15kN

Dimensions:

- Base plate – 282mm x 290mm
- Eye Diameter – 25mm
- Weight – 2mm plate – 1.635g
3mm plate – 2.290g

Fixing Details:

- Timber rafter/ batten – min 70mm x 35mm
- Steel purlin – min gauge 150 x 1.2 mm
- Roof Sheet – min gauge 0.42mm
- LYSAGHT TOPSPAN® 40 top hat, 550MPa min yield

Installation and Maintenance:

Installation by trained and certified personnel in accordance with AS/NZS 4488.2:1997, AS/NZS 1891.4:2009, ISO 22846 (2003) and manufacturer's instructions.

Inspection and load testing required by competent person at intervals not exceeding 12 months as specified in AS 1891.4:2009, AS/NZS 4488.2:1997 and ISO 22846 (2003).

Standards:

Complies with WHS Act 2011 and relevant Codes of Practice.

Australian Standard – AS/NZS 1891.4:2009, AS/NZS 4488.2:1997, ISO 22846 (2003) and AS/NZS 5532:2013.