



Rope Access Pty Ltd T/AS **Safety Roof Anchors**

P: +61 2 9939 3523 F: +61 2 9939 7868
PO Box 758, Freshwater NSW 2096

ABN: 67 147 756 670 ACN: 147 756 670

sales@safetyroofanchors.com.au
www.safetyroofanchors.com.au

S.R.A. fully engineered product range

400 Series

Truss-T-Grip®

Profile Grips

Ladder Restraint Brackets

Fixings

SPECIFICATION: BRC01 - LADDER RESTRAINT BRACKET



The System

Parapet type ladder restraint bracket is designed to provide safe/secure attachment point to the extension ladders while accessing a roof area.

Special Features:

- Unobtrusive
- Easy installation
- Extra deep design prevents ladder movement or slipping

Uses:

Provides a secure point onto which a ladder can be attached to prevent movement or slipping.

Can be installed onto concrete, masonry or metal parapet walls and like structures.

Technical Data

Material Used:

2mm 316 Stainless Steel

Finish:

Stainless Steel Polished smooth finish

Dimensions:

- 450mm x 105mm (at the base)
- 450mm x 200 (at the widest point)

Fixing Details:

The ladder restraint bracket can be fixed/installed to the roof structure, masonry, parapet wall and concrete by using appropriate fixings.

Maintenance:

No scheduled maintenance required.

Standards:

Complies with current Codes of Practice.



Rope Access Pty Ltd T/AS **Safety Roof Anchors**

P: +61 2 9939 3523 F: +61 2 9939 7868
PO Box 758, Freshwater NSW 2096

ABN: 67 147 756 670 ACN: 147 756 670

sales@safetyroofanchors.com.au
www.safetyroofanchors.com.au

S.R.A. fully engineered product range

400 Series

Truss-T-Grip®

Profile Grips

Ladder Restraint Brackets

Fixings

SPECIFICATION: BRC03 - GUTTERS SAFE LADDER RESTRAINT BRACKET



The System

Guttersafe type ladder restraint bracket is designed to provide safe/secure attachment point to the extension ladders on roofs and structures where ladders would otherwise come in contact with gutters causing damage and unsafe access conditions.

Special Features:

- Unobtrusive
- Easy installation
- Extra deep design prevents ladder movement or slipping
- Generous fixing slots to fit all roof sheets

Uses:

Provides a secure point onto which a ladder can be attached to prevent movement or slipping.

Can be installed onto concrete, masonry or metal roof sheets and like structures.

Technical Data

Material Used:

Body: 2mm 316 Stainless Steel

Straps: 3mm 316 Stainless Steel

Screws: 316 Stainless Steel

Finish:

Stainless Steel Polished smooth finish

Dimensions:

- Width 450mm
- Length 440mm

Weight:

2,510g

Fixing Details:

The ladder restraint bracket can be fixed/installed directly to the roof sheet extending over the gutter by using appropriate fixings.

Maintenance:

No scheduled maintenance required.

Standards:

Complies with current Codes of Practice.



Rope Access Pty Ltd T/AS Safety Roof Anchors

P: +61 2 9939 3523 F: +61 2 9939 7868
PO Box 758, Freshwater NSW 2096

ABN: 67 147 756 670 ACN: 147 756 670

sales@safetyroofanchors.com.au
www.safetyroofanchors.com.au

S.R.A. fully engineered product range

400 Series

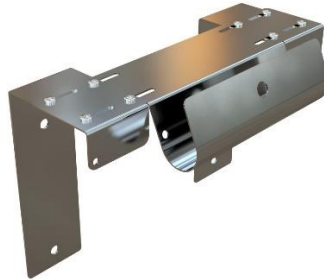
Truss-T-Grip®

Profile Grips

Ladder Restraint Brackets

Fixings

SPECIFICATION: BRC04 - WALLMOUNT LADDER RESTRAINT BRACKET



The System

Wallmount type ladder restraint bracket is designed to provide safe/secure attachment point to the extension ladders on roofs and structures where ladders would otherwise come in contact with the building's facade causing damage and unsafe access conditions.

Special Features:

- Unobtrusive
- Easy installation
- Extra deep design prevents ladder movement or slipping
- L – shape straps to enable installation on the wall

Uses:

Provides a secure point onto which a ladder can be attached to prevent movement or slipping.

Can be installed to concrete, masonry or metal vertical surfaces.

Technical Data

Material Used:

Body: 2mm 316 Stainless Steel

Straps: 3mm 316 Stainless Steel

Screws: 316 Stainless Steel

Finish:

Stainless Steel Polished smooth finish

Dimensions:

- Width 450mm

- Length 440mm

Weight:

2,510g

Fixing Details:

The ladder restraint bracket can be fixed/installed directly to the vertical masonry wall surface by using appropriate fixings.

Maintenance:

No scheduled maintenance required.

Standards:

Complies with current Codes of Practice.



Rope Access Pty Ltd T/AS **Safety Roof Anchors**

P: +61 2 9939 3523 F: +61 2 9939 7868
PO Box 758, Freshwater NSW 2096

ABN: 67 147 756 670 ACN: 147 756 670

sales@safetyroofanchors.com.au
www.safetyroofanchors.com.au

S.R.A. fully engineered product range

400 Series

Truss-T-Grip®

Profile Grips

Ladder Restraint Brackets

Fixings

SPECIFICATION: Eye bolt setting tool



The System

Developed for speedy and comfortable installation of eye bolts (AA402) in concrete in conjunction with Hilti HVU chemicals.

Special Features:

- Mini SDS Plus compatible
- Fits both eyebolt sizes - M12 and M16

Uses:

The SRA setting tool is designed to attach to all brands of rotary hammers and power drills equipped with Mini SDS Plus system to tackle the challenge of installing eyebolts in concrete while using Hilti HVU chemicals.

Product Warranty:

10 years from date of purchase subject to correct use and maintenance in accordance with manufacturer's specifications and recommendations.

Technical Data

Material Used:

Investment Cast 316 Stainless Steel

Finish:

- Electro polished

Dimensions:

- Overall length – 105mm
- Weight – 131g



Rope Access Pty Ltd T/AS **Safety Roof Anchors**

P: *61 2 9939 3523 F: *61 2 9939 7868
PO Box 758, Freshwater NSW 2096

ABN: 67 147 756 670 ACN: 147 756 670

sales@safetyroofanchors.com.au
www.safetyroofanchors.com.au

S.R.A. fully engineered product range

400 Series

Truss-T-Grip®

Profile Grips

Ladder Restraint Brackets

Fixings

SPECIFICATION: STP1 – Anchor Point Extension For Work At Height



The system

Stainless steel strop for use as a fall arrest anchor point extension for work at height.

Special Features:

Rated 15 kN for fall arrest

Swaged hard eyes at both ends

Copper crimps covered with UV stable PVC

Whole length of cable covered with UV stable PVC

Fall arrest rated Quicklink included

Uses:

STP is used as a fall arrest anchor point extension which can be supplied in multiple lengths typically:

1m (STP1)

2m (STP2)

3m (STP3)

STP can be customised to suit any required length.

Installation by trained and certified personnel in accordance with AS/NZS 1891.4:2009 and AS/NZS 5532:2013 and manufacturer's instructions.

Technical Data

Material Used:

316 Stainless Steel (wire rope, hard eyes and rated Quicklink)

Copper crimps

PVC polymer

Finish:

Stainless steel with PVC coated swaged terminations

Dimensions:

- Steel rope – dia 6.4 mm
- Eyelet diameter – 22 mm
- Eye to eye length – 1000mm, 2000mm, 3000mm or custom
- Quicklink gate opening: 20mm



Rope Access Pty Ltd T/AS Safety Roof Anchors

P: *61 2 9939 3523 F: *61 2 9939 7868
PO Box 758, Freshwater NSW 2096

ABN: 67 147 756 670 ACN: 147 756 670

sales@safetyroofanchors.com.au
www.safetyroofanchors.com.au

S.R.A. fully engineered product range

400 Series

Truss-T-Grip®

Profile Grips

Ladder Restraint Brackets

Fixings

SPECIFICATION: EP01 – GUTTER JUMPER



The System

Developed for protection of gutters and delicate building edges while abseiling over them, Gutter Jumper takes the headache out of this task with ease.

Special Features:

- Aluminium body construction with stainless steel components
- Rigorously tested by abseilers over 2- year period
- Tough rubber backing

Uses:

Gutter Jumper is designed for industrial rope access applications as a portable diversion over the building's gutters or other delicate edges. It must be anchored independently of the abseiling ropes to a suitable anchor point

For use by trained and certified personnel in accordance with AS/NZS 4488.2:1997 and manufacturer's instructions.

Technical Data

Material Used:

Aluminium (Body)
316 Stainless Steel (Bracket and Eye bolt)
Rubber (back)

Finish:

Aluminium checker plate

Abseil Capacity:

12 kN + rescue

Dimensions:

- Overall length – 1300 mm
- Width – 435 mm
- Eye Diameter – 40 mm x 26 mm
- Overall height – 187mm
- Weight – 12 Kg

Maintenance:

Inspection by a competent person at intervals not exceeding 12 months

Standards:

Complies with WHS Act 2011

Australian Standard – AS/NZS4488.2:1997, ISO22846 (2003)



Rope Access Pty Ltd T/AS **Safety Roof Anchors**

P: *61 2 9939 3523 F: *61 2 9939 7868
PO Box 758, Freshwater NSW 2096

ABN: 67 147 756 670 ACN: 147 756 670

sales@safetyroofanchors.com.au
www.safetyroofanchors.com.au

S.R.A. fully engineered product range

400 Series

Truss-T-Grip®

Profile Grips

Ladder Restraint Brackets

Fixings

SPECIFICATION: BP1 Backing plate/Base plate



The system

Designed as a backing plate for through bolt anchors, BP1 is also indispensable for water-proofing of penetrations in roof membranes. It also serves as a base plate for swivel anchor points where it offers a uniform surface for a smooth swivel action.

Special Features:

Smooth stainless steel plate

Raised centre

Uses:

BP1 forms part of swivel anchor point kits and can be used as a backing plate for through bolt anchor points.

Installation by trained and certified personnel in accordance with AS/NZS 4488.2:1997 and AS/NZS 1891.4:2009 and manufacturer's instructions.

Technical Data

Material Used:

316 Stainless Steel

Finish:

Bead blast or electro polished

Dimensions:

- Thickness of plate – 4 mm
- Plate Diameter – 120 mm
- Centre hole diameter – 13 mm
- Weight – 390 g



Rope Access Pty Ltd T/AS Safety Roof Anchors

P: +61 2 9939 3523 F: +61 2 9939 7868
PO Box 758, Freshwater NSW 2096

ABN: 67 147 756 670 ACN: 147 756 670

sales@safetyroofanchors.com.au
www.safetyroofanchors.com.au

S.R.A. fully engineered product range

400 Series

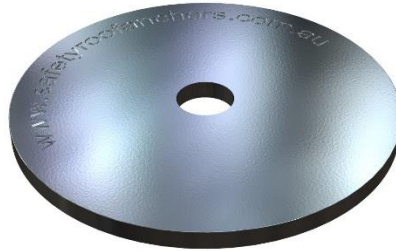
Truss-T-Grip®

Profile Grips

Ladder Restraint Brackets

Fixings

SPECIFICATION: BP2 Backing plate/Base plate



The system

Designed as a backing plate for through bolt anchors, BP2 is also indispensable for water-proofing of penetrations in roof membranes. It also serves as a base plate for swivel anchor points where it offers a uniform surface for a smooth swivel action.

Special Features:

Smooth stainless steel plate

Raised centre

Uses:

BP2 forms part of swivel anchor point kits and can be used as a backing plate for through bolt anchor points.

Installation by trained and certified personnel in accordance with AS/NZS 4488.2:1997 and AS/NZS 1891.4:2009 and manufacturer's instructions.

Technical Data

Material Used:

316 Stainless Steel

Finish:

Bead blast or electro polished

Dimensions:

- Thickness of plate – 4 mm
- Plate Diameter – 80 mm
- Centre hole diameter – 13 mm
- Weight – 150 g